



Next Meeting

Monday 9th May 2022

Activity - AUCTION NIGHT

(see details on page 5)

SSOS WINTER SHOW *page 11*

***This year is our 70th
Anniversary!!!***



**** Watch this Space ****

Note – please ensure you sign our attendance book on entry to the meeting hall

Use of hand sanitiser, masks and social distancing is encouraged where possible

***Thank-you for your
continued support of our
Covid safe practises***



Sutherland Shire Orchid Society Inc.

Bulletin - May 2022

Website: www.ssos.org.au

Email: info@ssos.org.au

The Sutherland Shire Orchid Society Inc. was founded in 1952 and is dedicated to the promotion, development and encouragement of a general interest and understanding of all aspects of orchid culture.

Monthly Meetings -

Meetings are held on the second Monday of each month at the Uniting Church Hall, corner Flora and Merton Streets, Sutherland @ 8pm, doors open 7pm. Visitors are always welcome. (please arrive by 7.45pm to check in)

The Society's **Covid-19 Safety Action Plan** is available at:

<https://ssos.org.au/COVID-19Plan.pdf>

President: *Gifford Bunt*

Vice President: *Rhonda Jackson*

Secretary: *David Hicks* E: davehicks@optusnet.com.au M: 0431 799 230

Treasurer: *Margaret Spring*

Committee: *Murray Aldridge, Frank Daniel, Wal Chapman, Diane Phillips*

Life Members: *Murray Aldridge, Wal & Janette Chapman, Jan Robinson, Bob Moar, Col Brandon, Audrey Marks.*

Bulletin / Website: *David Hicks / Rhonda Jackson*

Member Contributions – to have your 'Photos @ Home' or written articles included in the Bulletin, please forward to: davehicks@optusnet.com.au (prior to the 24th of each month)

President's Message -

Hi once again. I am looking forward to catching up with you all at our next member's meeting on May 9th. The Committee has an update on our shows/plans for the rest of 2022 to showcase members orchids. As Covid has put an end to all of our show plans the past 2 years or so it will be really great to have members now showcase all of their respective orchid varieties in the coming shows we have organized.

There will be more details on these events at the upcoming May meeting. To make these shows a success for all members we intend to make them as interesting as is possible as we still need to navigate Covid rules as relaxed as they are going forward. The committee is positive that you will be an active participant in these shows we have planned for the year coming up.

with best wishes Gifford

Royal Easter Show 2022

(1st Session)



Jan with her Coelogyne Linda Buckley – Champion Other Hybrid

(2nd Session)



Jan also won Champion Other Hybrid with - Coelogyne Janine Banks



Eleanor and Diane on the OSNSW Promo. Cart

Vale - Don Roberts (1942 - 2022)

Tribute by Ross Morrison – Secretary, Macarthur and District A.N.O.S.

It was with a great deal of sadness, Macarthur ANOS were informed of the passing of Don Roberts on the 10 April after a short period of illness.

Don Roberts was a fabulous orchid grower of both native and exotic orchids. Don's growing specialty included native *Dendrobium* and *Sarcochilus* species and hybrids and he won various Championships across many sections and many clubs and societies.

Don was an enthusiastic, friendly, and active volunteer across many Orchid Societies. At the time of his passing, *Don was President of Revesby Workers Australasian Native Orchid Club* (Don instigated and was a founding member of RWANOC) and a past President of both Panania-East Hills Orchid Society and Fairfield and District Orchid Society.

A member and committee member of Macarthur ANOS for over a decade - Don was always available to provide advice and assistance to members and his leadership skills and empathic nature served to strengthen all the orchid groups that Don was involved in.

On behalf of all the Macarthur ANOS members and other orchid growers Don has known, could I offer our sincere sympathies to his wife Di, sons Greg, Phil and daughter Kim. Macarthur Australasian Native Orchid Society will be poorer for his loss and our members will greatly miss his enthusiasm, quick wit and company.

Rest in Peace Don Roberts.

(Re-printed with Permission)

Sydney Royal Easter Show Display 2022

Courtesy – Jan Robinson

Thanks to a very small team of 4 dedicated (AKA crazy??) growers for Session One and 5 growers for Session Two, there was a very nice array of orchids displayed at the Royal Easter Show again this year.

The general public love our orchids and faithfully search us out, no matter if our display is in the main hall of the Flower and Garden Pavilion (like last year) or in one of the side rooms like this year. (Onions and radishes were in the main hall this year, can you believe it?!)

Rhonda Jackson and I manned one shift of the “orchid information cart” and Di Phillips and Eleanor Whitley did another shift, providing not only security for our plants but also answering questions from the public about them. Di was asked why my *Dendrochilum wenzelii* was in the Coelogyneae section when it clearly is not a Coelogyne, was it in the wrong class? A very good question from Joe Public, I reckon! If you don't know the answer, ask Di or me sometime.....

My hybrid coelogyne “girls” did well, Linda Buckley winning Champion Other Hybrid in the first judging session and Janine Banks winning the same in the second session. You might think it's a bit of a joke to win a Championship when there are only 60 or so plants in the competition.

Considering it is a pain in the you-know-what taking orchids into the show grounds between 10:30pm and 7:30 am; picking them up during these same hours two days later; and five days later repeating the whole process, it is actually a nice little bonus to add another one of those lovely felt sashes to my collection.

Personally, I think it is a VERY BIG DEAL to be part of the biggest agricultural and flower show in the Southern Hemisphere and I love every minute! Onions and radishes, you've got to be kidding! Bring on next year, bigger and better—and maybe some other SSOS member might want to join the team of Crazies????

Jan Robinson @ Home



C. Narooma x Sc. Mem. Ellen Littman
(ex T. Beehag)

Frank Daniel @ Home



Rlc. Volcano Star 'Volcano Queen' x
Catt. Hawaiian Wish



Unknown

MINUTES

SSOS GENERAL MEETING

11th April 2022

Vice President Rhonda Jackson opened the general meeting at 8.02pm and welcomed everyone to our April meeting

A very warm welcome also to our guests tonight, David Liu and Jenny Jiang.
(New member application received tonight)

APOLOGIES: Apologies were received from our President *Gifford Bunt*, *George Birss*, *David Brooks*, *Ian Ware*, *Mike* and *Diane Hannah*.

COVID SITUATION: due to Covid being still very much with us, members were encouraged to wear masks where social distancing is difficult, and continue the use of the hand sanitizer which is placed at various points around the hall. Note: masks are available at the sign in counter if required. Members were thanked for their continued support of our Covid safe practices.

PREVIOUS MINUTES: *Diane Phillips* motioned that the minutes of the March general meeting as distributed in the April Bulletin be accepted as accurate. Seconded *John Costa*. Motion carried.

- **Benching Point Score Awards from 2021:** two winners missed the March meeting presentations relating to the 2021-point score.
 1. In the Novice Division, *Sonia Tropoulos* took out 1st place with 24 points
Sonia was present to receive her prize – congratulations.
 2. In the Open Division, *Herbert Chen* took out 3rd place with 35 points
Herbert was not present tonight.
- **Committee Vacancy:** members were asked that anyone wishing to join our Committee, to please see David or Rhonda in the break, or to discuss with David after the meeting, phone - 0431 799 230.
- **Monthly Plant Benching:** due to some recent issues, members were reminded to ensure their plant entry cards are filled out correctly otherwise risking loss of points. The plant to be entered in the right class with the name of the plant and grower clearly written. Also, a laminated copy of the new Class Schedule and blank plant entry cards, are available each month at the benching area.
- **Membership Fees:** Members were reminded that they can still pay their fees to our Treasurer tonight, forms are available from our Secretary David. And to please don't forget to include that 'emergency contact' name and number on your renewal form, or email separately.
- **SSOS Name badges** – just a reminder to wear your name badge at the meetings, it does assist some of our newer members to identify you! And also, don't forget we have our name badge draw each month to win a prize!
- **Sales Table:** Thank-you to **Rob Nicol** who volunteered to manage our sales table each month and also to Diane Phillips who will be assisting. To give everyone the opportunity to buy something, there will be a 2-plant limit prior to the break, then no limit. Members were reminded that plants must not be sold prior to them being placed on the bench.
- **Supper:** It was noted to members that we still need volunteers to recommence a monthly supper. A roster was circulated and our thanks to Jan Riley who has volunteered in May. Tea / coffee / biscuits will be available from the back of the hall in the break, please bring your own cup or mug. Supper relies on volunteers to continue, so if you can help out, please put your name on the roster which will be circulated again next meeting.

Interesting Link – Todd Marshall from Fame Orchids Brisbane talks to Gardening Australia on Cattleyas, Dendrobiums, Oncidiums, re-potting, with views around his extensive nursery (8 mins. circa. 2020)

<https://www.abc.net.au/gardening/factsheets/easy-orchids/12370190>

(April Minutes Cont'd)

Margaret Spring @ Home



Colmanara Wildcat



Bulbophyllum kampu

Wal Chapman @ Home



Bulbophyllum rothchildianum
'Janette' AM / ACM OSNSW

ITEMS OF INTEREST

- **SSOS 2022 Winter Show:**

We are very pleased to advise our winter show is confirmed for Friday 10th and Saturday 11th June at the Reef Centre, Woollooware Shores Retirement Village, Taren Point with setup from 2-5pm on Thursday 9th June

Sales table, repotting table and raffle will operate, but entry is restricted to the general public. SSOS members, residents and their families only from Woollooware Shores Village. We'll provide an update on this at the May meeting.

For the sales bench, to help us maximise sales with the residents, we are requesting plants to be in flower where possible, and smaller to medium in size.

If you are selling Aust. native orchids you will need to obtain the tags from the Society and complete the necessary forms.

Of course, our Shows can't function efficiently on the day if we don't have members volunteering their time over the two days. If you can help out at certain times either with the raffle sales, sales bench or just providing security around the plants and PR with our visitors, please fill out your names within the time slots noted on the Volunteers Roster that will be available here tonight and also at the May meeting.

- **2022 Easter Show - Orchid Display and OSNSW Promo Cart:** Jan and Rhonda will be on the OSNSW promo cart on the 12th April 12-3pm and Diane and Eleanor will be there on the 13th April 9am-12pm
So, if you're out at the Show on those days, please drop by to see us and of course the beautiful orchid display!

- **Bunnings Caringbah** – as this was popular last time, Bunnings have again requested us to present a repotting class for their customers, and this is planned for 27th April 11am – 12pm. Frank, David and Rhonda will attend.

- **SSOS Bulletin:**

Hope everyone received your Bulletins OK last month and just a note from the editors that we're hoping you will continue to send in your contributions each month! If you wish to contribute, please forward your 'Photos @ Home' or articles to David at: E: davehicks@optusnet.com.au.

- **Activity for Tonight:** After the break, Gary Hodder gave us a terrific talk accompanied with slides on his work on Pollination of South East Asian Dendrobiums. Gary's talk commenced with the selection process for the cross, the very delicate and complicated process of pollination, development of the seed pods (some examples on display in the hall) and then harvesting, (orchid seed is so fine!) Then on to the process of flasking using sterilised medium (similar to the old agar) Thanks also to Michael and Richie Dimon who featured in the propagation process.
We then saw how the little plants are placed in either singular pots or community (com-pots) Following that we were treated to some beautiful slides of the fruits of their labour, strong plant growths and stunning colour combinations, many certainly unique in the orchid world. Congratulations Gary, much appreciated for sharing with us. Rhonda then thanked Gary on behalf of our members and presented him with a gift of our appreciation.

- **Activity for May:** great news, our **annual auction night** is back for 2022 at the May meeting!

The usual limit of 6 plants per member will apply.

Please ensure all plants are properly tagged, tidy, pest and disease free
Full details will be included in the **May Bulletin** issued later this month

Melissa Karayannis
@ Home



Paph. charlesworthii x (Magic Pool
x Magic Oro) (ex T. Beehag)



Zyg. crinitum Loddiges x Zga.
Dynamo 'Splashes'

Jan Robinson @ Home



Pot. Edwin Houseman x Blc.
'Meditation' (ex T. Beehag)

(April Minutes Cont'd)

Lucky Plants – Winners from March – Rob Nicol, D. Mitsios, Vic Petrovski

Raffle: Winners for April:

Jenny Liang, Diane Phillips, Lee Buivids, Jan Robinson, Margaret Spring, Col Brandon, Graeme Davies

April Judges' Choice Awards:

PLANT OF THE NIGHT: W & J Chapman – Dendrochilum wenzelii

OPEN HYBRID: Vic Petrovski – Den. Yashiga Fantasy 'Russell Vale Glory'

OPEN SPECIES: W & J Chapman – Dendrochilum wenzelii

INTERMEDIATE: Rhonda Jackson – Dendrochilum cobbianum

NOVICE: John Ng – Dendrochilum cobbianum 'Keith'

PRESIDENT'S AWARD: Diane Phillips - Coelogyne ovalis var. minor

Rhonda thanked everyone for their attendance tonight.

Our next general meeting is on **Monday 9th May 2022 @ 8pm**

And don't forget it's our Plant Auction Night!

Meeting closed at 9.30 pm.

May Meeting - Plant Auction Night.

General Rules

Entering Plants:

If you are putting plants in the auction, simply place two tags in your plant's pot, one with your name clearly written on it, and the other with the name of the plant. *All plants should be in good condition, disease and pest free, and being well established in their pots.*

Reserve Pricing:

If a plant has a reserve price, write the word "**Reserve**" and the price on the tag. We will give you a yellow stick-on spot to stick onto your plant to indicate it has a reserve price.

Plant Limits:

There is a limit of **6 plants** each member can sell at the auction.

Payment:

You will be paid less the 15% commission on the next meeting night. Club vouchers for the sales table can be used as payment in the auction. Purchases will be **CASH ONLY** so bring plenty.

The Society reserves the right to reject any plants for sale without giving a reason.

Please Note: There will be **no sales table** at the May meeting.

Thank-you and good luck everyone, let's have a great night!

April Benching



Bc. Hsingying Joy 'Jilly' exhibited
by D. Mitsios



Paph. spicerianum exhibited by
Pheng Sanaphay



MONTHLY JUDGING RESULTS

For: Apr-22

PLANT OF THE NIGHT

Winner Ddc. wenzelii

W. & J.
Chapman

OPEN JUDGES CHOICE HYBRID

Winner Den. Yashiga Fantasy 'Russell Vale Glory'

V. Petrovski

OPEN JUDGES CHOICE SPECIES

Winner Ddc. wenzelii

W. & J.
Chapman

INTERMEDIATE JUDGES CHOICE

Winner Ddc. cobbianum

R. Jackson

NOVICE & JUNIOR JUDGES CHOICE

Winner Ddc. cobbianum 'Keith'

J. Ng

PRESIDENT'S CHOICE

Winner Coel. ovalis v. minor

D. Phillips

CLASS # 1 AUSTRALIAN NATIVE SPECIES

1st Den. monophyllum

C. Brandon

2nd Den. bigibbum x compactum

L. Buivids

CLASS # 2 PAPHIOPEDILUMS HYBRIDS

1st Paph. Dragkonyx

J. Robinson

2nd Paph. Temptation

D. Mitsios

3rd Paph. 'unknown'

P. Sanaphay

CLASS # 3 AUSTRALIAN NATIVE HYBRIDS

1st Sarco. Amber Dawn

D. Mitsios

2nd Pterstylis x furcillata

R. Dimon

3rd Pterstylis x furcillata

R. Dimon

4th Den. Anthedon Magic 'Smelly'

C. Brandon

CLASS # 4 LAELIINAE HYBRIDS CLASSICAL SHAPE

1st Catt. TA 2

V. Petrovski

2nd Bc. California Girl 'Orchid library'

V. Petrovski

3rd Pot. Mitsuo Akatsuka 'Volcano Queen'

V. Petrovski

4th Bc. Hsingying Joy 'Jilly'

D. Mitsios

CLASS # 5 DENDROBIUM HYBRIDS

1st Den. Yashiga Fantasy 'Russell Vale Glory'

V. Petrovski

2nd Den. Aussie Ira x fuliginosa x Fire Glow

C. Brandon

3rd Den. macrophyllum x Den. tapiniense

V. Petrovski

CLASS # 6 LAELIINAE HYBRIDS – NON-CLASSICAL & CLUSTERS

1st Bc. Chyong Guu Linnet 'Smile'

D. Mitsios

2nd Bc. Greenwich 'Elmhurst'

D. Mitsios

CLASS # 7 ONCIDIINAE HYBRIDS

1st Odontonia Pacific Paranoia 'Other side of Cool'

V. Petrovski

< PHOTO LEFT - Correction from April Bulletin

Judge's Choice Open Class Hybrid exhibited by Vic Petrovski

The name against the photo last month should have been:

Catt. Caudebec 'SC' (4N) X Catt. Chocolate Drop (4N)

David Hicks @ Home



Npp. Beverley Road 'Global' x
Zyg. Conway's Choice 'Bravo'



Catt. Secret Love 'Angel'



Onc. 'Unknown'

Australian Orchid Council

CONFERENCE

2 - 4 September 2022

Logan Metro Sports & Events Centre,
357 Browns Plains Rd, Crestmead,
QLD

<https://aocc2022.org>

CLASS # 8 CYMBIDIUM HYBRID

1st Cym. Butterfly Kisses 'Viridian' V. Petrovski

CLASS # 9 SPECIES ASIAN

1st Ddc. wenzellii W. & J. Chapman
2nd Ddc. macrathum D. Mitsios
3rd Paph. spicerianum P. Sanaphay
4th Ddc. cobbianum 'Keith' L. Buivids

CLASS # 10 MISC. HYBRIDS

1st NPP. Memoria Jimmy Lyttle x Z. Kiwi Choice 'Florafest' V. Petrovski
2nd Masd. Copperwing 'Sunburst' x Latin Bride 'Sunset Boy' V. Petrovski
3rd Masd. Machu Picchu x Peppermint Glow 'The One' V. Petrovski
4th Zygonisia Muraskikomachi V. Petrovski

CLASS # 11 SPECIES OTHER THAN ASIAN

1st Milt. spectabilis var mooreana x Milt. spectabilis 'Geyserland' D. Mitsios

CLASS # 12 NOVICE HYBRIDS

1st Bulb. Santa Claus x Bulb. annandalei M. Spring
2nd Onc. Heaven Scent 'Redolence' M. Spring

CLASS # 13 NOVICE SPECIES

1st Ddc. cobbianum 'Keith' J. Ng
2nd Prosthechea cochleata J. Ng
3rd C. labiata v coerulea J. Ng

CLASS # 14 INTERMEDIATE HYBRIDS

1st Onc. Kenneth Bivin R. Nicol
2nd Onc. Everglades Elegance 'Nancy Lee' R. Jackson

CLASS # 15 INTERMEDIATE SPECIES

1st Ddc. cobbinum R. Jackson

From the Bench in April – courtesy George Birss



Dendrochilum wenzelii - exhibited by Wal Chapman

Open Species Judge's Choice and Plant of The Night

DENDROCHILUM – Pronounced den-dro-KYE –lum

The majority of these species originate from SE Asia, Taiwan & New Guinea with the main location being the Philippines, Borneo & Sumatra. Mostly small growing plants, many resembling grasses, grow at elevations over 1000metres, making them ideal for green houses in the Sutherland area.

(from the Bench in April Cont'd)



Dendrochilum cobbianum
exhibited by Rhonda Jackson

Intermediate Judge's Choice



Dendrochilum cobbianum 'Keith'
exhibited by John Ng.

Novice Judges Choice

The inflorescence that can be as long as 50cm in length, depending on variety, appears on new growth and can be pendulous or erect. Each inflorescence holds hundreds of miniature fragrant star shaped flowers that are usually in two rows.

Dendrochilum wenzelii. - From the Philippines above 1000 m has leathery leaves about 10cm long. The inflorescence arises from new growth and is semi arching and just above the leaves and appears in autumn and mid-winter with rows of bright red flowers, there are some varieties that are yellow to brown or tan. These plants like good air movement, humid conditions that are moist and semi shade. Keep plants drier when temperatures are lower. I have found that they love water well pots.

Dendrochilum cobbianum – from the Philippines above 1200m found as an epiphyte on mossy tree trunks and as lithophyte on mossy rocks. This variety has longer leaves, again producing on new growth with 50cm long arching inflorescence with many 1 1/2 to 2cm fragrant, vanilla scented flowers that can be white to green/white or creamy in colour with yellow to gold throat. Moist, humid conditions with good air movement.

**Dendrobium Yashiga Fantasy
'Russell Vale Glory'**- exhibited by
Vic Petrovski: **Open Hybrid
Judge's Choice**

This plant was Hybrid of the night last year also.

Vic was awarded a HCC / AOC on 28th Feb 2021 with this magnificent orchid which at the time had two inflorescence 128mm long with 30 flowers and 21 buds.

Again, a fantastic display and well grown.



Prosthechea cochleata - John Ng

Commonly referred to as the "clamshell" or "cockleshell" orchid it is a species found in Central America, West Indies, Columbia, Venezuela and Sth Florida.

'Known as the "Black Orchid", It is the National flower of Belize.

These orchids appear to be "upside down" with the lip at the top and the petals hanging, resembling a five-legged octopus. Long lasting fragrant flowers where the upper part of the lip is mostly dark purple and the petals are cream to yellowish green.

Found at around 1000m they are a cool grower.

Gongora galeata - Exhibited by Lee Buivids

These orchids are not every bodies 'cup of tea' with their strange crouching habits and very unusual shaped flowers.

A species from Mexico growing at 600 to 1800m is ideal for a bush house in the Shire. Prefers to hang under the bench to protect the leave that like bright light but not direct sunlight.

Pendulous 15 to 20cm long inflorescence, that carry many orange scented, fawn to yellow fragrant flowers.

Semi dry winter suited to wire baskets for drainage.



From my Green House

Courtesy - George Birss

Genus Masdevallia

There are about 600 species in this miniature to medium genus where they grow as epiphytes or lithophytes. They originate from Central and South American countries and are found in mountainous regions of cloud forests where cool and moist conditions are uniform year-round.



Photo George Birss



Masdevallias have no pseudobulbs and produce clumps of single fleshy leaves that with their fine root system store moisture. They come in an amazing range of shapes sizes and bright colours. The sepals are fused into tube like structures giving the flower a "kite" like appearance. Inflorescence can be 30cm long where flowers are high above the foliage or very short keeping the flower at leaf height or lower.

Massies like small pots, keep pot bound, where a specimen plant can be in a 50mm tube. They prefer sphagnum moss or very fine bark / perlite mix, moist, shaded & cool humid conditions. Plants can be placed on a tray of gravel or stand in trays of shallow water to maintain humidity. These plants don't like direct sun and prefer shady conditions but still require bright light to flower.

I grow Massies fairly successfully and at present have about 10 plants in flower. They sit in trays of water under a hard plastic roof with fairly bright conditions, that get good air movement. Most are in small, 50mm or 80mm pots in sphag. But the larger growers are in 100mm pots. It is essential to water several times a day in 40-degree temperatures otherwise the leaves will drop off and then there is little hope of survival. Not the easiest genus to try but if you want to have a go pick plants that have orange colour in their background, a bit more heat tolerant.



Photo George Birss

Genus Dracula

These are cool growing orchids closely related to Masdevallias with about 100 species that originate in Columbia and Equador and located in the moist high cloud forests. Being close to the Equator, plants experience the same weather condition all year round, cool and humid with good air movement.

They thrive where the day temperature is 26 deg. C and the night 12 deg. C a very narrow range, and will deteriorate if conditions don't suit.



Vic Petrovski @ Home



From my Green House Cont'd - *Dracula's*

Dracs. are grown in mesh pots to allow the inflorescence to pop out through the pot and hang down, and like sphagnum moss to keep the fine roots moist. The blooms are very unusual and outstanding, although hard to see as they face towards the ground.

The flower is similar to a Massie. flower but the inner surface resembles a face, similar to a monkey face, with two eyes and a bulbous nose that on some wobbles.

I have unfortunately killed a number of Dracs. as the growing needs are hard to replicate.

One that I have had a bit of success with is "Swamp Fox" (pictured right) which is a hybrid of *D. cordobae* X *D. bella* registered in 2000 by Gary Hart (SSOS member).

This one is a little heat tolerant and I have had it for maybe 15 years. I grow it with my Massies. and was sitting in about 2cm of water until I noticed flower spikes protruding from the sides, now it hangs in the same spot but with the flowers about 5cm above the water.



Most Dracs I don't think are suitable to Sydney conditions.

Society Promotional Day - April 27th

In Conjunction with Bunnings Caringbah



The Society received a request from Bunnings Caringbah to hold a potting demonstration for their customers. The one we did previously was a real success. Team Daniel, being Frank, David Hicks and myself conducted the one-hour session. Ken Wooley from Bunnings assembled a range of orchid related products which we referred to in our talks. Frank demonstrated the repotting of a cymbidium Sarah Jean after dividing it into two.

Two lucky people were given these plants. I had a sickly phalaenopsis which I repotted to show that even we have plants that struggle! David brought along a few cold growing plants as an example of what people may be able to grow. About 14 people attended. They asked lots of questions so they seemed very interested in our 'words of wisdom'. We invited them to our next meeting, being our auction. Ken was very pleased with the turn out. We certainly enjoyed it as well. - Rhonda Jackson



Coel. Massangeana - D. Hicks

Vic Petrovski @ Home



Port Mitsuo Akatsuka
'Volcano Queens'



Odontocidium Everglades
Elegance 'Nancy Lee'



2022 AOF Essay Prize

The AOF Essay Prize is an annual writing competition, established with a generous endowment by the Slade family.

There will be three prizes –

1st Prize 2nd Prize 3rd Prize

\$350.00 \$250.00 \$150.00

The Foundation invites all Australian orchid growers to consider the topic for 2022 and submit an entry. We would like to hear about your ideas and experiences and benefit from them.

ESSAY TOPIC FOR 2022:

Too Many Orchids: 'managing space and addiction'

Everybody who commences growing orchids and is smitten by the "Orchid Bug" eventually has to address the issue of "space and addiction". How have you dealt with this complex issue to satisfy both sides of the equation?

The deadline for receipt of all entries is June 30th 2022

(for full details see attached AOF March Newsletter)

Sutherland Shire Orchid Society Inc.

WINTER SHOW

2022

Friday 10th & Sat. 11th June

(setup Thursday 9th June 2pm – 5pm)

VENUE:

Reef Centre, Woollooware Shores

Retirement Village

2-28 Alexander Avenue, Taren Point

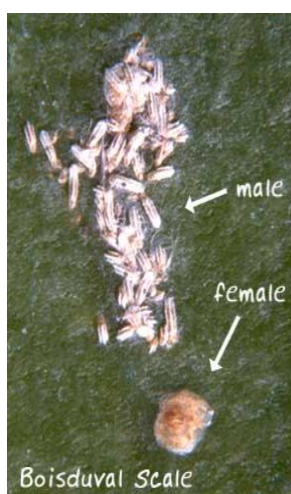
(Display, Sales, Re-potting Demo, Raffle)

10am – 4pm Friday, 10am – 2pm Saturday

(Note: Show is ***not*** open to the general public)



Pest Forum



Females on Cattleya leaf



Male and Female

The Curse of Boisdual Scale

reprinted with permission - *courtesy Jim Brydie*

Part 1 - General

Sometimes just called 'orchid scale', this is one of the most insidious, and difficult orchid pests to control. Left untreated, it usually kills the plant.

Worse still for us, Boisdual scale is not just a pest of orchids. It is a common pest of many palm species, and it also infests an amazingly wide range of other plants. Including, but not limited to Agave, Ivy, Cactus, Bromeliads, Cyprus pines, Wattle, Pepper trees (Schinus), Dracaena, Cassia, Roses, Citrus trees, Figs, Mango, Grapes, Coffee, & Bananas.

This species (*Diaspis boisdualii*) originated in the tropical Americas but is now distributed worldwide. It is thought to have been introduced to the world during the early 1800's when Europe went mad importing exotic plants collected from all over the world. It was named in 1869 in honour of M. Boisdual, who collected the first scale specimens off plants in the greenhouses of the Jardin de Luxembourg in Paris.

Boisdual is an armoured scale, which means that the body of the scale insect is protected by a cover (the armour) made from a combination of wax secreted by the insect, and the cast skins of previous growth stages. This external armour gives the scale a white appearance but if you remove it, the body of the insect itself is usually yellow.

Male and female Boisdual scale look completely different. Adult females (in their armour) are circular, and about 1.2 to 2.5 mm diameter. The males are rectangular, perhaps 0.4mm wide by up to say 1.2mm long. They have 3 distinct ridges along their length. Another difference between the sexes is that individual females tend to be distinctly separate on the plant surface, even though there may be many in a small area at times. The males on the other hand are just the opposite. They cluster in mealy, cottony masses, which are easily mistaken for Mealy bug or even white fly.

Under their armour, adult females appear larvae-like. They have no wings, legs, or eyes, and remain, in one place, throughout their lives to feed and reproduce.

Adult males are again very different in appearance and behavior from the females. They are tiny, winged creatures with eyes and legs. When mature, they emerge from their armour in late afternoon to look for a mate, a process which is probably aided by pheromones secreted by the females. They do not feed as adults, living only a few hours to mate, and because of their short life, you are very unlikely to see them.

So far, we have only discussed the adults. Like most insects, armour scales go through a series of pre adult nymph or crawler stages before they reach maturity. Females go through 3, and males go through 5 stages. The number of days for each developmental stage, and the number of generations per year, depend on temperature, humidity, and rainfall, but an average time for a generation of scale insects to mature, from egg to adult, would be about 30 days. They do however have overlapping generations and it is partly this continual procreation that makes it such a formidable pest to eliminate. In one scientific study, 7 females were introduced onto a Cattleya plant, and within 5 months produced a colony of 10,000 scales.

The process begins with the female laying eggs under its protective shell. The first stage after hatching is the only nymphal stage with legs, so the insects are called crawlers. The crawler stage is short, and crawlers do not feed. After hatching, crawlers may stay under the maternal armour for several hours until outside conditions, especially temperature and humidity, are good. After they leave the cover, they wander for a period ranging from minutes to days, but usually a few hours. At the end of the wandering period they flatten against the leaf or stem and begin to secrete their armour. As crawlers, the insects can move from plant to plant, but as they only travel short distances, this is mostly only if the plants are touching each other.

Newly settled nymphs insert their piercing and sucking mouthparts into plant tissue and start feeding on plant juices. Female nymphs shed their skin twice as they grow and develop. Males have a 5-stage development and do not feed during the last two stages. Once the crawler has settled to feed, all subsequent immature stages occur while the nymph is fixed in one place, under their armour, except for the last stage in the male development, which is the adult male that then leaves the armour in search of a mate.

How the pest Spreads – Natural spread is short distance only, by crawlers walking after they hatch. Ants do not move them around because this scale does not produce honeydew, or any other product that interests them, but as the crawlers are so tiny, they can also be distributed from plant to plant by wind or moving air currents, or by falling from plants hanging above. But, without any doubt whatsoever, the worst vector for spreading this pest is mankind. Long range dispersal of scale usually occurs by man transporting infested plant material. This can be within a collection by moving plants around, or between collections, as infected plants are sold or given away. When this happens another collection of plants is infested before you know it.

Part 2 - next month covers treatment and control methods.



Upcoming Shows and Events

19-22 May, *Bankstown Orchid Society Autumn Show*, Chester Square Shopping Centre, 1 Leicester St, Chester Hill.

27-29 May, *Orchids Out West* - Hawkesbury Race Club, 1 Clarendon Rd, Clarendon

10-11 June, *Sutherland Shire Orchid Society Winter Show* - Woollooware Shores Retirement Village, 2-28 Alexander Ave. Taren Point (*closed to the public*)

25-26 June, *Mingara Orchid Fair and Show* - Mingara Recreation Club, Tumby Umbi

14-17 July, *Bankstown Orchid Society Winter Show* – Lidcombe Shopping Centre, Level 1 / 92 Parramatta Road, Lidcombe.

12-14 August, *National Orchid Extravaganza* - (incorporating the Paphiopedilum Society of NSW), The Arena Sports Club, 140 Rookwood Rd, Yagoona

19-20 August, *Sutherland Shire Orchid Society Spring Show* (to be confirmed)

19-21 August, *St Ives Fair* - St Ives Showground

7-9 October, *Southern Orchid Spectacular* - Sutherland Basketball Stadium, Waratah Park, Rawson Ave, Sutherland



Supper is back in May!

Tea or coffee plus pre wrapped biscuits will be available from the back of the hall.

Please don't forget to bring your own cup or mug

If you can assist us in future months, please include your name on the Roster – see Secretary

Dear SSOS Members – we would really appreciate your @ Home photos or articles to include in our monthly Bulletins.

To contribute, please email to:

David Hicks E: davehicks@optusnet.com.au

(by the 24th of each month)

thank-you - *Editor*

Disclaimer: The growing guides included in this Bulletin are provided as a starting basis to cultivation, and local conditions in your area may require modification to these suggestions. The Sutherland Shire Orchid Society Inc. does not endorse or support any claims or opinions expressed by the authors of these articles, and are not responsible for the results of your cultivation practices.