

# SUTHERLAND SHIRE ORCHID SOCIETY

**BULLETIN: May 2021**

**www.ssos.org.au**

## APRIL MEETING JUDGE'S CHOICE WINNERS:



**OPEN HYBRID &  
OPEN PON**

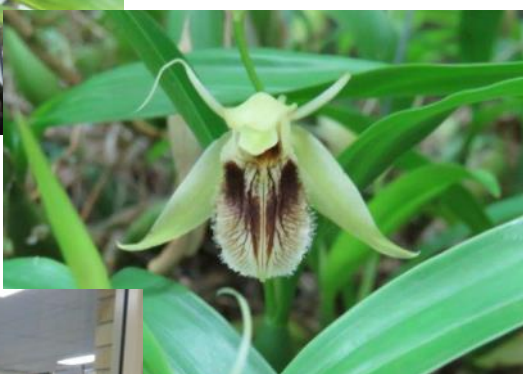
**C. Mini Purple**

*D. Went*

**OPEN SPECIES**

**Coel. Ovalis v minor**

*D. Phillips*



**INTERMEDIATE:**

**C. Hawaiian Polka  
Dot X Lc Bonanza**

*J. Chan*



**NOVICE:**

**Ctna. Koolau Sunset  
'Hawaii'**

*M. Karayannis*



**PRESIDENT'S  
CHOICE:**

**Epi porpax**

*R. Cawley*

(Photos by Pam Davies)

## **Next Meeting:**

Monday 10th May

8pm Main Meeting

(Please arrive at 7.45 to be  
Covid Checked-In)

**Speaker:**

**Gary Hodder**

**"Deciduous  
Dendrobium Orchids"**

Sutherland Uniting  
Church Auditorium,

Cnr Flora & Merton  
Streets, Sutherland

**PRESIDENT**

*Jan Robinson*

**VICE PRESIDENT**

*Frank Daniel*

**TREASURER**

*John Costa*

**SECRETARY**

*David Hicks*

davehicks

@optusnet.com.au

0431 799 230

**EDITOR**

*Melissa Karayannis*

mjbk1@bigpond.com



# SSOS Members, Bloomin'Awesome At Home



C. Penny Kuroda 'Spots' x Slc. Orchidom Leopard 'SVO'  
(Christoff Mans)

Bulb. Elizabeth Anne Buckleberry  
(Robert Nicol)



Miltassia Sunset (David Hicks)



Ceratostylis rubra (Diane Phillips)



L. perinii (Robert Nicol)



Paph Agnes Wong x Yi-Ying Spring Mist  
(Jan Robinson)



# SSOS Members, Bloomin'Awesome At Home

Bulb. rothschildianum (Robert Nicol)



Rlc. Hsinying Sunbeam 'Auranti-Gem'  
(Melissa Karayannis)



C. Volcano Star x Hawaiian Wish (Jan Robinson)



Blc. Burdekin Storm 'Midnight' x C. Menn. Jerome  
Schultz 'Bette' (Christoff Mans)



Mtssa. Astec Toni (Christoff Mans)



Slc. Elusive Dream (Robert Nicol)



# President's Message...

Greetings Fellow Members,

What an orchid-filled month April was for me, was it the same for you? The fun started with the Easter Show. Four late night excursions back and forth between home and Gate 9 at Homebush, 40 kms each way, taking plants to the show and picking them up again. A few of those trips done with my hubby but most done with **George**. Thanks for all that driving, **George**! We thought we were doing it tough, meanwhile **Vic** and **Millie** were doing the same # of trips but at almost twice the distance, 70 kms for them each way to Gate 9! **Gavin** got off easy, his commute was only 30 kms each way. (**Heath** says we all are committed—or should be, ha!) Totally worth it though and a great effort by all the participants. Add to that manning the orchid cart at the Show for two shifts, with **Frank** one day and **Rhonda** another day, and there went my first two weeks of April.



Have you moved your orchids to their winter homes yet? That's what I did the next week. Softcanes and laelia purpuratas out into full sun; took the shade cloth off my speciosums and part of my bush house; moved some sarcs to a sunnier spot. Also got hubby to put some mesh in my glass house to hang plants needing winter heat, hopefully they won't dry out too quickly, plus it made room for more orchids to get crammed in there.

On the 19<sup>th</sup> I was the guest speaker at Shoalhaven Orchid Society, coincidentally it was their 65<sup>th</sup> anniversary. These icing sugar cymbidiums that were on top of the cake looked so real! The next day **Louise** and I caught up with another of our SSOS members, **Noelene**, who has moved down south. She gave us a tour of her wonderful new orchid house while her hubby cooked lunch for us. **Louise**, **Noelene** and I had a lovely time, talking mostly about—you guessed it!—orchids.



The following Saturday some SSOS members headed south to the orchid sale near Nowra while others headed north to Royale for their Open Weekend. **David** and **Judith Brooks**, **Melissa**, **Rhonda**, **John Hely** and I managed to find the sale venue (several of us took a wrong turn and ended up on a horrible dirt road first!), the plants had all been sorted and individually priced before the sale. Well done to the combined efforts of Shoalhaven OS, **Louise**, and Illawarra OS, **Vic** and **Millie**, and thank you for inviting SSOS to attend. We all drove away with plenty of lovely new plants to add to our collections and also added some to the Society's raffle plant stock. Hopefully you also found some good plants at Royale, **John Costa**, **Gary Hodder**, **George** and **Heath**.

Isn't it fantastic to be out and about again and going to orchid events?!?! We are so very, very fortunate to live where we do. Keep safe and hope to see you at the May monthly meeting,



## CONGRATULATIONS to Vic Petrovski

who recently won his first two Australian national orchid awards via the online award judging system currently in place during Covid19!! Vic won an Award of Merit ('AM') with this stunning cream cattleya with three flowers and on the same day was awarded a Highly Commended Certificate ('HCC') for his gorgeous purple and white hard cane Dendrobium Yoshiga 'Fantasy.' Well done to Vic, who said having now been through the process, he had no idea there was so much involved to be considered for an award—all that measuring and photographing and paperwork!! (FYI, an AM is given to a plant that scores at least 80 but less than 85 in a 100 point system; an HCC is for a plant that scores at least 75 points but less than 80. Points are given by the judges for shape, colour and texture, floriferousness, size, habit and arrangement, and substance. Shape is roughly 1/3 of the points, colour and texture is 1/3, and the other categories combined make up the other 1/3 of the total points awarded.) If you want to know how to get your plant considered for an award, ask Vic the next time you see him.



**Sc. Lana Coryell 'Deborah' AM/AOC**



**Dendrobium Yoshiga  
'Fantasy' HCC/AOC**



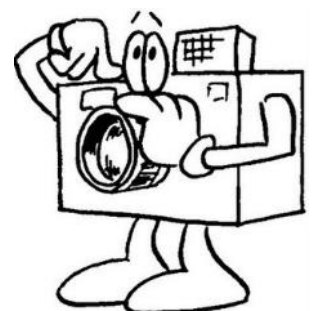
## We still need help with bulletin content!

**Email** photos of orchids currently in bloom and their names to Melissa at [mjbk1@bigpond.com](mailto:mjbk1@bigpond.com) for the next bulletin

**Want to write an article for the bulletin??**

Email to [mjbk1@bigpond.com](mailto:mjbk1@bigpond.com)

***Both before Sunday May 30th please !***





## Ted Beehag Blooms

Many of our members have orchids that were originally part of the late Ted Beehag's orchid collection. We are featuring some of Ted's current blooms in the hands of new caretakers.

If you would like to join in, just email ([mjbk1@bigpond.com](mailto:mjbk1@bigpond.com)) photos to Editor as they open up!



Slc. Bright Hawaii = Slc. Bright Angel  
x C. Hawaiian Jewel (Ian Ware)



Slc. Love Angel = Slc. Bright Angel x Lc. Love Knot  
#49 (Ian Ware)

## VALE CHRIS BANNELL

It is with regret that we inform you of the passing of Chris Bannell.

Chris joined our Society in September 2017 as a novice grower. He regularly attended meetings and you may remember him sitting towards the front of the hall always well dressed.

He often won an orchid in the raffle to add to his small collection. Chris regularly volunteered at our shows to see raffle tickets where he charmed the ladies with his cheeky smile and sunny disposition. He lived on his own in Sutherland and only recently went into a nursing home. He passed away peacefully on 25 March 2021 aged 95 years.





## SSOS SUPPORTS EASTER SHOW

This year's orchid display at the Easter Show was the best it's been in a long time, thanks in large part to the efforts of a few of your fellow members. Our plants had pride of place in the middle of the Garden Pavilion—and didn't they get some attention from the general public! With sun streaming down through the sky lights directly over the display area, our orchids couldn't have looked any better!



In the first session of orchid judging, 68 plants were entered by 7 exhibitors and over half of these plants belonged to us 4 SSOS members. Gavin benched 16 plants, George took 11, Vic contributed 8, and I put in 7. The "unknown" plants did extremely well: Gavin won Champion Laeliinae with an unknown cross of bowringiana and "a schomburgkia of some sort," as he texted me later, and his gorgeous white vanda that won Champion Monopodial was also an unknown! Well done, Gavin. Champion Other Orchid was won by Vic with a stunning hard cane, Dendrobium Jade Junior 'Sanadee,' good on you, Vic!



Gavin was too busy socializing to bring any orchids to the second session. But the rest of us six exhibitors still managed to front up with 51 plants, again over half were contributed by three SSOS members: George 11, Vic 10, and me 5. Vic won Champion Other Orchid again in this session with the same lovely dendrobium. Well done once again, Vic!



Also supporting the orchid fraternity as well as SSOS were Rhonda and Frank, who both helped me on the info cart for two shifts. Besides keeping an eye on our plants, we answered questions from the public about orchids and also gave out information on orchid societies and/or orchid shows coming up in their local area if asked.







Grand Champion—or Supreme Champion as it is called at the Easter Show—was won in both sessions by a non-SSOS member, Joe Gafa, with a beautifully grown *Oncidium crispum*. I got to know Joe on the Taiwan orchid tour last year and talked him into entering plants in this year's Easter Show, he certainly raised the bar in the competition with his fabulous orchids. (Unfortunately, George's gorgeous little massie that was chockers with flowers was in the same class as Joe's winning oncidium, bad luck George!!)



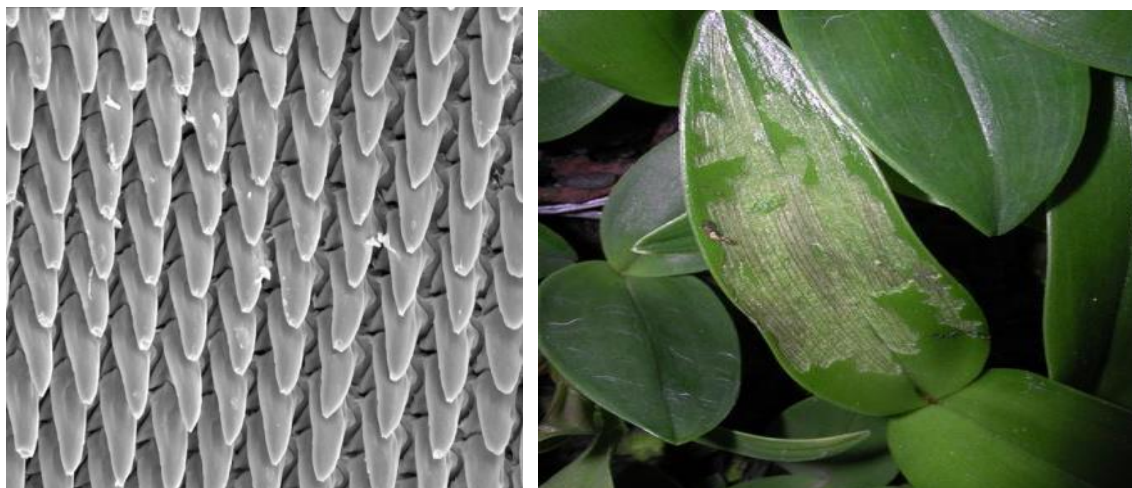
Thank you Vic, George, Gavin, Frank and Rhonda for helping me ensure that orchids continue to have a presence in the Royal Easter Show. Yes, it's a pain to take our orchids into the show late at night and pick them up two days later, only to have to turn around and do it all over again for the second session. Especially when they hold us at the guard's station for over an hour before letting us proceed to the pavilion! But that's all part of the fun, I reckon.

Submitted by Jan Robinson





## ***Snails and Slugs on Orchids*** (By Gary Hodder)



Snails and slugs are a constant problem for shade house orchid growers. They love the open medium of bark used for orchids and can cause great damage to new growths, roots, leaves and flowers. Most of the time the first sign that there is trouble will be an almost ruined plant, when they will invade that fast, particularly at night.

They are an intriguing creature as they do not have teeth but instead they have a spinning disc having approx 14000 microscopic teeth as hard as diamond in their mouth called a *Radula* as seen in a magnified photograph above. This *Radula* rasps away the surface of the leaf or flower and as a result the damage caused does not start from the edge of the leaf but can start anywhere.

The easiest way to determine if it is a snail or slug causing the damage is to look for the tell tail sign of a silver trail of glistening slime on the flower, the top of the media or the leaves.

A snail reproduces by laying eggs. After fertilization, the eggs go through a process of growth inside the snail, until they are ready to be delivered. After that, both snails lay their eggs and bury them in separate places inside a small hole made in the topsoil in a cool place. The mating process of snails allows them to deliver eggs at a consistent rate.

When hatched the young snail is an Hermaphrodite which is called any organism that has male and female reproductive organs and therefore can produce both eggs and spermatozoa. It is like if the snails were male and female at the same time.

As the young snail matures it is a male but later in life it becomes a female . However if nature discovers there is a shortage of males, it can revert back to a male or alternatively fertilize itself with its own dart.

A snail's skin is very sensitive and if kept as pets they can not be handled by bare human hands as the acid on the human skin will burn the snail skin. When growing up if there is a deficiency in calcium a young snail can eat the shell of the parent to grow their own shell.



## Coming Soon in 2021

*(OMG we have a calendar again ! )*

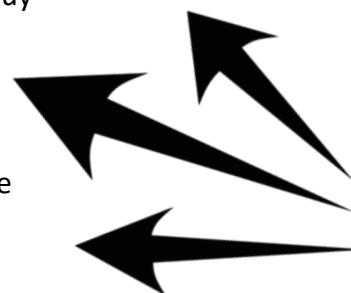


- Bankstown Orchid Soc, 20-23rd May ,  
Chester Square Shopping Centre
- North Shore Orchid Soc, 10-12 June, St Ives Shopping Village
- Mingara Orchid Club Fair & Show , 26-27th June, Mingara Recreation Club, Tumby Tumby
- Eastern Suburbs Orchid Soc. 31 July -1st August, Flower Power Mascot
- St Ives Orchid Fair, 13-15 August, St Ives Showground.

## CHANGE IN SALES BENCH RULES!!

To make it more fair for all members attending our monthly meetings, we will be trialing a new approach to our Sales Bench: Starting with the June meeting, NO PLANTS WILL BE SOLD prior to the break (at approx 8:30 pm.) The break will be 15 – 20 minutes to allow everyone to buy plants as well as to view the judging results, while maintaining proper social distance of course.

If you have any questions or concerns about this change, speak to a Committee member.



Blc. Goldenzelle 'Tokyo' HCCAOC x  
Sc. Mem. Ellen Littman 'Deborah'  
(Christoff Mans)



Lc. Jack Flash (Robert Nicol)





## The Speaker at May's Meeting: Gary Hodder



### Deciduous Dendrobium Orchids

By Gary Hodder copyright on photographs

*As you throw your plant into the green bin, do you ever wonder why that particular dendrobium lost all its leaves? Come along to our May monthly meeting and hear Gary Hodder give a talk on deciduous dendrobiums and perhaps the mystery of your plant's "demise" will be revealed.....*

#### JUNE'S SPEAKER:

**Wal Chapman 'Flora & Fauna of Southern South America'**

### Keep in touch via our Facebook Group: "Sutherland Orchid Society"

Post your growing tips, recent mail order purchases, questions or just what's in flower at your place..... we'd all love to hear about it.!

If you are having any problems, please contact Jan Robinson [jadrob@bigpond.com](mailto:jadrob@bigpond.com) or Dan Coulton 0419 466986 for assistance.



**Disclaimer:** The growing guides are provided only as a starting basis to cultivation. Local conditions in your area may require modification to these suggestions. SSOS will not be responsible for the results of your cultivation practices. The opinions expressed in these articles are those of the author and not those of SSOS, SSOS in no way endorses or supports any claims or opinions of said authors.



## SSOS GENERAL MEETING Minutes – 12 April 2021

President Jan opened the meeting at 8.05 pm and extended a very warm welcome to members

Members (31 tonight) were thanked for attending our 3<sup>rd</sup> meeting for 2021, modelled to comply with the current Covid-19 regulations which thankfully still remains under the 2m2 rule

**Apologies:** Wal Chapman, Murray Aldridge

**New Members / Visitors:** Nil



### **GENERAL BUSINESS:**

**VALE SSOS member Chris Bannell** - a minute's silence was observed in honour of Chris who passed on 25 March, aged 95.

Members were reminded to respect the current social distancing rules, and enable a fair go to everyone especially around the plant benching and sales table areas.

Members were requested to ensure the attendance sheet columns are filled out correctly and signed. This is required for both Covid and Insurance purposes.

The serving of supper continues to be deferred until further notice

31 of the new Society name badges still await collection, 3 were collected this evening.

The annual plant auction normally held in May will now be deferred to a later month due to current low attendance numbers. Members will be advised in advance ASAP.

Members were thanked and requested to keep sending in to our Editor Melissa, those photos and any articles or information you wish to share in the Bulletin.

SSOS Winter/Spring Shows – good news, Woollooware Shores has re-opened its doors to our Society for 2021 (depending on any Covid changes). SSOS Committee is currently in negotiation and members will be advised of the outcome as soon as possible.

### **ITEMS OF INTEREST:**

**Easter Show Display** – Jan asked if any members attended the show and presented an overview of the success of the Easter Show orchid display where four SSOS members participated over the 2 sessions, (Jan, Vic, Gavin and George) representing (57%) of the exhibitors! A total of 68 plants on display, 42 benched by members from SSOS!

#### **Individual Results:**

**Jan Robertson** – First x 2, Third x 2

**George Birss** – First x1, Second x 5, Third x 3

**Vic Petrovski** – First x 5, Third x 1, plus Champion Other

**Gavin Curtis** – First x 3, Second x 3, Third x 4, plus Champion Laeliinae

**Supreme Champion of Show** – Joe Gafa, with an Oncidium species



**OSNSW Promotional Cart** – Our special thanks to Jan, Frank and Rhonda who manned the cart at various times to provide orchid advice whilst distributing information fliers for our Society to promote the hobby and hopefully attract some new membership!

Royale Orchids April Show @ Peats Ridge was noted for 24 & 25 April 2021

Members were reminded of the deceased sale of Shoalhaven member Phil Harrington's orchids at Beaumont near Nowra on 24<sup>th</sup> April. Members were advised to be cautious of the unsealed road off Moss Vale Road in wet weather, cash only and bring your own carry trays.

Orchidwiz @ was used again tonight to provide some valuable insight into the parentage, cultural requirements and flowering expectations for the raffle plants we have on offer. Thanks Melissa!

**Meeting Activity for April** – tonight we presented a short video from Clive Halls at Mt. Beenak Orchids in Vic. The subject was ' **repotting and cultivation of Sarcophilus orchids** '. As part of the post video discussion, several members had brought along some of their 'problem' plants for evaluation by the more experienced growers. Our most experienced Sarco. grower, Col Brandon, led the way from the stage, with plants also from Jan, Rhonda and Melissa. Our special thanks go to Col for a most informative insight into the various growth habits influenced by parentage, and also sharing his vast knowledge and experience regarding back ground on breeding and overall general conditions required for success,

### **OTHER ITEMS**

**Name Badge Draw:** 3 drawn, no result

**Raffle Winners:** Frank Daniel, Jan, Lee Buivids, Dianne Phillips, Tom Scerri, Gifford Bunt, Pam Davies.

Jan closed the meeting at approx. 9.30pm and thanked all members for attendance.

## MONTHLY JUDGING RESULTS Apr-21

### PLANT OF NIGHT

Winner C. Mini Purple D. Went

### OPEN CLASS HYBRID

Winner C. Mini Purple D. Went

### OPEN CLASS SPECIES

Winner Coel. ovalis v miner D. Phillips

### INTERMEDIATE JUDGES CHOICE

Winner C. Hawaiian Polka Dot x Lc Bonanza J. Chan

### NOVICE & JUNIOR JUDGES CHOICE

Winner Ctna. Koolau Sunset 'Hawaii' M.Karayannis

### PRESIDENT'S CHOICE

Winner Epidendrum porpax R. Cawley

### CLASS # 1 AUSTRALIAN NATIVE SPECIES

1st Den. monophyllum 'Steve' C. Brandon

### CLASS # 4 LAELIINAE HYBRIDS CLASSICAL SHAPE

1st Blc. Queen Sirikit 'Diamond Crown' L. Buivids

2nd Cattleya 'unknown' P. Ng

3rd Rlc. Shinaphat Diamond H. Chen

### CLASS # 6 LAELIINAE HYBRIDS -NON CLASSICAL & CLUSTERS

1st C. Mini Purple D. Went

2nd C. TA 2 Dona V. Petrovski

3rd C. Portia 'Cannizaro' P. Ng

4th Lc. Puppy Love L. Buivids

### CLASS # 7 ONCIDIINAE HYBRIDS

1st Onc. Sharry Baby H. Chen

2nd Mltssa. Charles M. Fitch D. Went

### CLASS # 8 CYMBIDIUM HYBRIDS

1st Cym. Tassie Blakiston x Kalahari Blaze No. 8 ?? J. Costa

### CLASS # 9 SPECIES ASIAN

1st Coel. ovalis v miner D. Phillips

2nd Ddc. cobbianum P. Davies

3rd Paph. spicerianum P. Sanaphay

4th Den. griffithianum G. Hodder

### CLASS # 10 MISC. HYBRIDS

1st Bulb. Elizabeth Ann 'Buckleberry' H. Chen

2nd Phal. 'unknown' H. Chen

3rd Z. Seagulls Landing x Z.Blackii H. Chen

### CLASS # 11 SPECIES OTHER THAN ASIAN

1st Ggr. galeata L. Buivids

### CLASS # 12 NOVICE HYBRIDS

1st Ctna. Koolau Sunset 'Hawaii' M.Karayannis

2nd Lc. Australian Frangipani S. Tropoulos

3rd Lc.Audebells Sthn Cross x Blc Goldenzelle x Glen Maiden SC S. Tropoulos

4th C.bowringiana x (Lc.Susan HolcombexChocolate Drop M.Karayannis



#### CLASS # 14 INTERMEDIATE HYBRIDS

1st	C. Hawaiian Polka Dot x Lc Bonanza
2nd	Arthurara Sea Snake 'Unforgettable'
3rd	Brassia Daddy Long Legs
4th	C. Lulu Song

J. Chan  
R. Cawley  
R. Cawley  
J. Chan

#### CLASS # 15 INTERMEDIATE SPECIES

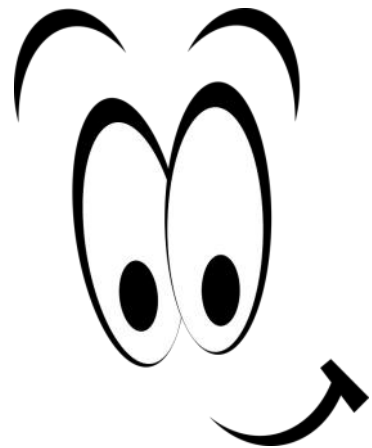
1st	Epidendrum porpax
2nd	Ddc. arachnites
3rd	Laelia anceps var 'Sanbar Gloriosa' x 'Mendenhal'
4th	Holcoglossum kimballianum

R. Cawley  
R. Cawley  
F. Daniel  
R. Cawley

#### Orchid Companions at John Hely's Place:



Possibly :  
*Glenurus gratus*



"Flowers  
always make  
people better;  
happier, and  
more helpful;  
they are  
sunshine,  
food and  
medicine for  
the soul."

-Luther Burbank

© Orchidst

#### Plant tags for your yard

