



Next Meeting

Monday 13th June 2022

Speaker – Jan Robinson on:

“My Orchid Experiments during Covid Lockdowns”

SSOS WINTER SHOW p.9

This year is our 70th Anniversary!!!



**** Watch this Space ****

Note – please ensure you sign our attendance book on entry to the meeting hall

Use of hand sanitiser, masks and social distancing is encouraged where possible

Thank-you for your continued support of our Covid safe practises



Sutherland Shire Orchid Society Inc.

Bulletin - June 2022

Website: www.ssos.org.au

Email: info@ssos.org.au

The Sutherland Shire Orchid Society Inc. was founded in 1952 and is dedicated to the promotion, development and encouragement of a general interest and understanding of all aspects of orchid culture.

Monthly Meetings -

Meetings are held on the second Monday of each month at the Uniting Church Hall, corner Flora and Merton Streets, Sutherland @ 8pm, doors open 7pm. Visitors are always welcome. (please arrive by 7.45pm to check in)

The Society's **Covid-19 Safety Action Plan** is available at:
<https://ssos.org.au/COVID-19Plan.pdf>

President: Gifford Bunt

Vice President: Rhonda Jackson

Secretary: David Hicks E: davehicks@optusnet.com.au M: 0431 799 230

Treasurer: Margaret Spring

Committee: Murray Aldridge, Frank Daniel, Diane Phillips

Life Members: Murray Aldridge, Wal & Janette Chapman, Jan Robinson, Bob Moar, Col Brandon, Audrey Marks.

Bulletin / Website: David Hicks / Rhonda Jackson

Member Contributions – to have your 'Photos @ Home' or written articles included in the Bulletin, please forward to: davehicks@optusnet.com.au (prior to the 24th of each month)

President's Message –

Hi once again Society members.

What a really great auction night we had on the 9th May!

Based on all the positive feedback from the night, it was enjoyed by all, with the majority of plants presented for sale being sold.

This is most pleasing in view of the effort by members in selecting their particular variety and quality of orchids to offer up for sale on our first auction function post Covid.

Going forward we have our upcoming 2022 Winter Show happening on Friday June 10th and Saturday June 11th at the Woollooware Shores Retirement Village, so please plan to attend and help make it a success! Set-up and plant entries will be accepted from 2-5pm on Thursday June 9th. (please refer to our ad on page 9) You would have received full details and all the documents required for entering plants into the Show, on a separate email to all members prior to this Bulletin. Hope to see you all there!

with best wishes Gifford

Vic Petrovski @ Home



VALE – Trevor Hyde

Tribute courtesy Jan Robinson



Sadly, one of our members, Trevor Hyde, moved on to the great orchid garden in the sky on the 13th of May.

He and his wife June joined our Society in March 1997, at which point they had been growing orchids for over 20 years.

Trevor mostly benched cattleyas and phalaenopsis and took great pride in bringing his plants to our monthly meetings and shows. He especially loved the big “exhibition type” catts.

Trevor was one of the first SSOS members who “befriended” me when I joined the Society and always asked how my orchids were doing. Years later on the Society’s bus trip to Orchids Out West in May 2011, we sat next to each other and in between May Luk’s jokes, Trevor told me many fascinating stories about his travels overseas.

He was a doctor and worked with my brother-in-law at one of the local hospitals for many years. Through this connection, his extended family knew some of my extended family and when it came time for Trevor to downsize his orchid collection, Trevor’s family asked my help to organize the sale.

I was surprised at the variety of his collection; it included many genera other than just catts and phallies and quite a few species plants as well as all the hybrids. Some of you hopefully still have orchids that came from Trevor’s collection.

In appreciation of my help, Trevor gave me a large plant of Lc Little Susie ‘Joy’ which is in flower now, (see photo above) what a poignant reminder of this kind man.

Like many orchid growers, Trevor loved a bargain price for a good plant. He had a bit of a reputation for bringing his show plants at the last minute so that they got put in the front of the display.

Good on him, when I’m in my 80’s and still bringing plants to our shows, I hope to do the same thing!

Rest in Peace, Trevor, we will miss you.

Vic Petrovski @ Home



Diuris corymbosa

Interesting Link for June – Courtesy Gardening Australia: *Helen Richards OAM* from the AOF, talks about how unique our Australian Terrestrial Orchids are – *Corybus*, *Pterostylis*, *Caladenia*, *Chiloglottis*, *Diurus* and others, circa 2017 (approx 6 mins)

<https://www.youtube.com/watch?v=zqxzenDTCb4>

MINUTES

SSOS GENERAL MEETING

9th May 2022

President Gifford opened the May general meeting at 8.03pm, extending a warm welcome to everyone.

Gifford then addressed the meeting mentioning this was his first 'face to face' meeting as President, and how he was very much looking forward to getting to know everyone, and together with our Committee, working towards planning our shows and other regular events that we have all missed during the Covid lockdowns of the past two years.

GUESTS: a very warm welcome extended to our guest tonight - Martin Davies

APOLOGIES: apologies were received tonight from George Birss, Diane Phillips, Jan Riley.

NEW MEMBERS: Welcome tonight to our new members, David Liu and Jenny Jiang, wishing them both an enjoyable and rewarding journey with our Society.

Also, Adrian O'Malley applied for membership tonight. Adrian is a horticulturist with 15 years' experience and interest in Australian Dendrobiums and Dockrillia's. - welcome Adrian.

CORRESPONDENCE IN:

- Various other Society Bulletins including OSNSW Orchid News.
- Flyer for Mingara Show and Fair 25 - 26 June
- Flyer for National Orchid Extravaganza 12 - 14 August

CORRESPONDENCE OUT:

- Nil

BUSINESS ARISING:

- Nil

PREVIOUS MINUTES: *John Costa* motioned that the minutes of the April general meeting as distributed in the May Bulletin be accepted as accurate. Seconded *Robert Nicol*, Motion carried.

David Hicks @ Home



Galeopetalum Ariene Amour
'Conching'



Zygoneria Zest 'Lime Violet' x Arthur
Elle 'Essendon'



Catt. Goldenzelle

(May Minutes Cont'd)

- **Committee Vacancy:** our Committee vacancy was again raised with members, and we asked that anyone wishing to join our Committee, please see David or Gifford in the break, or if you wish to discuss after the meeting, phone David on - 0431 799 230. Our President reminded of the need for a strong Committee to ensure our future meetings, shows and other events can continue to be arranged and managed successfully.
- **Monthly Plant Benching:** due to recent issues, members were reminded that if you are an open grower and enter plants in the novice class, you risk forfeiting any places awarded and the points for the month. To assist, a new set of class signs with larger and clearer colour coded fonts were in use tonight. If you are unsure in which class your plant should be entered, please ask for assistance.
- **Annual Membership Fees:** the last call went out tonight for anyone who may have overlooked their fee renewal. Members were reminded that being unfinancial, you will not be able to bench or sell plants, or receive the Bulletin or other mail outs. Please see our Treasurer Margaret who has the forms, if you wish to pay tonight.
- **Supper:** As previously advised, our supper is back on tonight and we hope you all brought you own mugs or cups! Tea or coffee and biscuits are available in the break from the back of the hall. To keep this going on a monthly basis, we need volunteers, so if you can help out, please enter your name on the roster that is circulating tonight.

ITEMS OF INTEREST

• SSOS 2022 Winter Show:

Our winter show is confirmed for Friday 10th and Saturday 11th June at the Reef Centre, Woollooware Shores Retirement Village, Taren Point with setup from 2-5pm on Thursday 9th June

Sales table, re-potting sessions, and raffle will operate but entry is open only to SSOS members and Village residents, and families.

To assist maximising sales with the residents, we are requesting sales bench plants to ideally to be in flower where possible, and smaller to medium in size.

If you are selling Aust. native orchids you will need to obtain the tags from the Society and complete the necessary forms.

Of course, our Shows can't function efficiently on the day if we don't have members volunteering their time over the two days. If you can help out at certain times either with the raffle sales, sales bench or just providing security around the plants and PR with our visitors, please fill out your names within the time slots noted on the Volunteer's Roster that will be circulating here tonight. Prior to the show, a copy of the roster will be emailed out to those members who have volunteered.

Full details including the show schedule and other documents will be separately emailed out towards the end of May.

- **SSOS Spring Show:** due to a clash with the St Ives Fair, new proposed dates of 1-3 September were mentioned, however these dates also need to be confirmed against clashes with other major events, and also any further changes will need confirmation with Management from our venue at Woollooware Shores. Committee to discuss and members to be advised as soon as possible.
- **Society Promo Day @ Bunnings:** there was a good turnout of the public to our promo day held at Bunnings Caringbah on the 27th April. Frank, Rhonda and David represented the Society, and those attending were presented with a re-potting demonstration of cymbidiums, tips on the survival of phallies commonly bought from the store, and also some general growing hints on other 'bush-house grown' genera. Bunnings supplied several samples of their products for the demo, and Ken, their Events Co-ordinator, indicated Bunnings are certainly keen to have us back again.

Melissa Karayannis
@ Home



L. anceps 'Gloriosa Bathhurst'



L. anceps Walibrunn x
'Roseminah' Plus O



Bcdm. Possum Woolfe

(May Minutes Cont'd)

- **Shire Markets Promo Day:** confirmed for Saturday 23rd July (see page 13)
- **Activity for May:** tonight, was the return of our annual plant auction. There was a fantastic variety of good quality plants offered up for sale. Our special thanks to our auctioneer Murray, who not only offered his experience and expert advice, but also added his special brand of humour along the way. Thank-you also to Wal and David Brooks, and to those who acted as 'runners' for the cash and delivering the plants. A great night had by all to secure some very good plants, and to also support our Society's finances!
- **Activity for June:** our thanks to Jan Robinson who will be talking to us on her 'orchid experiments during Covid lockdowns'

Name Badge Draw: 4 names were drawn, no winner for May.

Lucky Plants:

Winners from April Meeting— Lee Buivids, John Costa, Vic Petrovski

Raffle: Winners for May:

Rob Nicol (x2), John Ng (x2), Gifford Bunt, Ian Ware, Christine Castle, John Hely, Adrian O'Malley, Wayne McEvoy

A special thank-you went out to Col Brandon for supplying the additional Aust. Native orchids for the raffle tonight

April Judges' Choice Awards:

PLANT OF THE NIGHT: Jan Robinson – Coel mooreana 'Brockhurst'

OPEN HYBRID: Vic Petrovski – Onc. Sharry Baby 'Sweet Fragrance'

OPEN SPECIES: Jan Robinson – Coel. mooreana 'Brockhurst'

INTERMEDIATE: Rhonda Jackson – Coel. Jannine Banks

NOVICE: John Ng – Pot. Hsinying Aloha

PRESIDENT'S AWARD: Rob Nicol - Onc. Easy Gold x Onc. Glowing Gold 'Blotches'

Gifford thanked everyone for their attendance tonight

Members were reminded that we don't meet again before our Winter Show on the 10th and 11th June, setup on 9th 2-5pm and to watch for the separate mail out with the show schedule and other forms. We look forward to seeing everyone there.

Our next general meeting is on **Monday 13th June 2022 @ 8pm**

Meeting closed at 9.40 pm.



Dear OrchidWiz Community,

We want to thank you for a wonderful 17 years. It has been a great journey and we have enjoyed sharing our passion for orchids with you. Though not an easy decision, we have decided to close OrchidWiz on December 31, 2022.

We want you to know that until Dec. 31, we will continue to release updates and provide support. The last shipment will be OrchidWiz X9.1 in early to mid-December. We will provide support until the end of the month. If OrchidWiz X8.2 is your last update, you may purchase the quarterly update and maintenance plan. Please be aware that you will receive X8.3, the upgrade to X9 and X9.1.

Thank you for your business, for all the stories, data, and images that you shared with us and the greater community.

We wish you continued joy growing orchids.

Fondly,
The Team at OrchidWiz
Alex & Marianna

May Benching

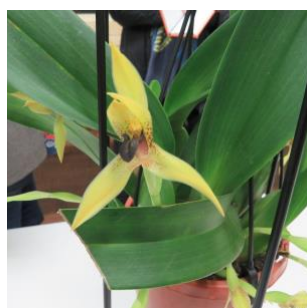
Novice Judges Choice



Pot. Hsinying 'Aloha'
- John Ng



Slc. Hsin Buu Lady 'Red Beauty'
- Vic Petrovski



Max. cucullata – John Hely



Dend. macrophyllum x Dend.
tapiniense – Vic Petrovski

Monthly Judging Results

For: May 2022

PLANT OF THE NIGHT

Winner Coel. mooreana 'Brockhurst' J. Robinson

OPEN JUDGES CHOICE HYBRID

Winner Onc. Sharry Baby 'Sweet Fragrance' V. Petrovski

OPEN JUDGES CHOICE SPECIES

Winner Coel. mooreana 'Brockhurst' J. Robinson

INTERMEDIATE JUDGES CHOICE

Winner Coel. Jannine Banks R. Jackson

NOVICE & JUNIOR JUDGES CHOICE

Winner Pot. Hsinying Aloha J. Ng

PRESIDENT'S CHOICE

Winner Onc. Easy Gold x Glowing Gold 'Blotches' R. Nicol

CLASS # 1 AUSTRALIAN NATIVE SPECIES

1st Den. monophyllum C. Brandon
2nd Ptst. metcalfei R. Dimon

CLASS # 2 PAPHIOPEDILUMS HYBRIDS

1st Paph. Orchilla 'Chilton' D. Mitsios
2nd P. Hung Sheng Glow x Paph. Hung Sheng Bay M. Dimon
3rd Paph. Hung Sheng Red x Paph. fairrieianum W. McEvoy

CLASS # 3 AUSTRALIAN NATIVE HYBRIDS

1st Den. Avril's Gold 'Copperpot' J. Robinson
2nd Den. Suzanne 'Peewee' C. Brandon

CLASS # 4 LAELIINAE HYBRIDS CLASSICAL SHAPE

1st Blc. Chia Lin 'Shin Su' W. McEvoy
2nd Cat. 'unknown' R. Ettrick
3rd Slc. Hsin Buu Lady 'Red Beauty' V. Petrovski
4th Blc. Dewy Forest 'Kudos' V. Petrovski

CLASS # 5 DENDROBIUM HYBRIDS

1st Den. macrophyllum x Den. tapiniense V. Petrovski
2nd Den. Excelsa V. Petrovski

CLASS # 7 ONCIDIINAE HYBRIDS

1st Onc. Sharry Baby 'Sweet Fragrance' V. Petrovski
2nd Onc. Sweet Sugar V. Petrovski
3rd Beallara Diana Dunn V. Petrovski

CLASS # 8 CYMBID. HYBRIDS

1st Cym. Idyllic Glamour 'Erns Choice' V. Petrovski

May Benching



Onc. 'Unknown'
- Dimitrios Mitsios



Blc. Chia Lin 'Shin Su'
- Wayne McEvoy



Pterostylis metcalfei
- Richard Dimon



Catt. bowringiana 'Black Beauty' – Gary Hodder

(May Benching Results Cont'd)

CLASS # 9 SPECIES ASIAN

1st	Coel. mooreana 'Brockhurst'	J. Robinson
2nd	Cym. dayanum 'Red'	D. Mitsios
3rd	Paph. spicerianum 'Cane Toad'	J. Robinson
4th	Ddc. saccolabium	D. Mitsios

CLASS # 10 MISC. HYBRIDS

1st	Npp. Adelaide Jester x Artur Elle	J. Robinson
2nd	Zga. Kuitpo	G. Hodder
3rd	Zygonisia Murasakikomachi	V. Petrovski

CLASS # 11 SPECIES OTHER THAN ASIAN

1st	Onc. sotoanum	J. Robinson
2nd	Oncda. 'unknown'	D. Mitsios
3rd	Epi. porpax	D. Mitsios
4th	Cat. bowringiana 'Black Beauty'	G. Hodder

CLASS # 12 NOVICE HYBRIDS

1st	Pot. Hsinying Aloha	J. Ng
2nd	Pot. Qing Ming Beauty	J. Ng
3rd	Catasetum Kay Lowe Sofia x Sangwineum	J. Ng
4th	Lc. Jungle Queen x C. Chocolate Drop	J. Ng

CLASS # 14 INTERMEDIATE HYBRIDS

1st	Coel. Jannine Banks	R. Jackson
2nd	Bc. Isd. Charm 'Carmela' x Sc Cherry Bee 'Kate'	R. Nicol
3rd	Onc. Easy Gold x Glowing Gold 'Blotches'	R. Nicol
4th	Beallara Marfitch	F. Daniel

CLASS # 15 INTERMEDIATE SPECIES

1st	Paph. insigne	J. Hely
2nd	Max. cucullata	J. Hely
3rd	Coel. ovalis	J. Hely
4th	Stenoglottis longifolia	R. Jackson

From the Bench in May – courtesy George Birss

Oncidium Sharry Baby 'Sweet Fragrance' – exhibited by Vic Petrovski – Judges Choice Open Hybrid

Sometimes called the "chocolate orchid", not necessarily for its colour but it's fantastic chocolate fragrance that is strongest in the early morning.



This is one of the more famous Oncidium Hybrid crosses (Oncid. Jamie Sutton & Oncid. Honolulu) where the parents are native to Southern and Central America.

This plant is a vigorous grower & takes no time to take over the whole pot. With a one metre branching inflorescence that can hold from 75 to 250 flowers that are burgundy and yellow with a striking white lip.

They require dappled direct light with frequent watering to encourage fleshy pseudobulbs. Often this hybrid will

develop black spots on the foliage, this is not a fungus or virus but probably the result of water on the foliage late in the day and night.

May Benching

President's Choice



Onc. Easy Gold x Glowing Gold
'Blotches' – Rob Nicol



Blc. Deception Grace
– Vic Petrovski



Catasetum Kay Lowe 'Sofia' x
Catasetum sanuleum
– John Ng

(from the bench in May Cont'd)

Coelogyne mooreana 'Brockhurst' exhibited by Jan Robinson – **Judges Choice Open Species + PON**

One of the best clones of this species originates from Vietnam and grows at elevations of around 1300metres, in the cloudy rain forests.

Brockhurst stays compact at around 30 to 40 cm in height. Spikes appear on the new growths well before the pseudobulbs are formed. The inflorescence is just at foliage height with rather large flowers that are from 75 to 100mm across. The pristine white flowers have the most striking yellow / orange colour in the throat of the lip and are quite fragrant.

This coelogyne always displays nicely with its upright inflorescence where the showy flowers look at you.



Coelogyne Jannine Banks – exhibited by Rhonda Jackson - **Intermediate Judges Choice**

A primary hybrid originated and registered by Phil Spence in 1995.

A cross between Coel. mooreana & Coel. flaccida where the cross is dominated by Coel. mooreana where the colour and flower shape come through and the branching semi pendulous comes from flaccida.

The fragrant flowers open in succession along the inflorescence and have a long blooming period.



Dendrobium monophyllum – exhibited by Col Brandon **1st Class #1 - Australian Native Species**

Monophyllum comes from the Greek word **mono** meaning single and **phylon** meaning leaf, although two leaves are quite common. Named by F. Mueller, in 1859, from a plant found in the Moreton Bay area.

Common name for this orchid is "Lily of the Valley" from the sweet jasmine or fruit smell of the long lasting, 1cm flowers.

A species orchid from Queensland and NSW, from Grafton up. In the southern areas it can be found on or near the ground as an epiphyte or lithophytes from the coastal inland. The further north, in the tropics, it is usually found at elevations around 600m to 1000m, higher in the forests chasing light.

The short inflorescence arises from the newer mature conical pseudobulbs with 3 to 20 small yellow flowers that hang down or horizontal, rarely straight up. Best mounted, on rather longer mounts, as they have a tendency to grow longways, with running pseudobulbs. They are robust and need a steady supply of nutrients. They require good light and constant air movement. Monophyllums hate to be wet in winter and even reasonably dry in summer, so hang where they get minimal water on a mount that does not retain moisture. A great little Australian native, that requires little care and takes up little space, for a great reward.



May Benching



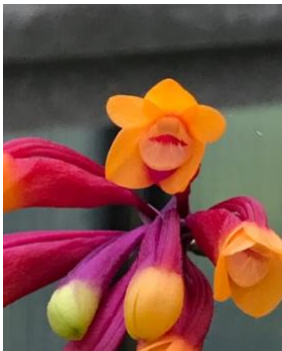
Coel. ovalis – John Hely



(Full Photo)

Onc. Sharry Baby.
'Sweet Fragrance' – Vic Petrovski

Jan Robinson @ Home



Dend. lawesii var. bicolour



Friday 10th & Sat. 11th June 2022

(set-up and plant booking in)

Thursday 9th June 2pm – 5pm

VENUE:

Reef Centre, Woollooware Shores

Retirement Village

2-28 Alexander Avenue, Taren Point

Display, Sales, Re-Potting Sessions, Orchid Raffle

10am – 4pm Friday, 10am – 3pm Saturday

(Raffle Draw 2pm Saturday)

For SSOS Members and Village Residents, Families and Friends

(Note: Show is not open to the general public)

Show Contact: Frank Daniel 0417 406 374

Show Marshal: Bob Moar 9524 9377



www.ccbasw.com.au
Affiliated with the Orchid Society of New South Wales and the Australian Orchid Council

2022 NATIONAL ORCHID EXTRAVAGANZA

Incorporating The Paphiopedilum Society of NSW

Friday 12th August to Sunday 14th August 2022

The Arena Sports Club
140 Rookwood Road
Yagoona NSW 2199

**9am to 4pm Friday and Saturday
9am to 3pm Sunday**

Come along and see some of the best flowering orchids in the country on display and purchase some top quality plants from industry experts.

Championship Benching

A variety of displays, including Floral Art and Individual Blooms.

Admission – Adults \$5
Children under 14 years free



Participating vendors:

Tinonee Orchids
David Keanelly Orchids
Orchid Mania
Devon Meadows Orchids
Royale Orchids

George Serhan Orchids
Orchids on Newbold
David Wain Orchids
Selective Orchids
AAA Bromeliads
Johnston's Orchid & Indoor Plant Nurseries
Orchid Supplies by George & Mike

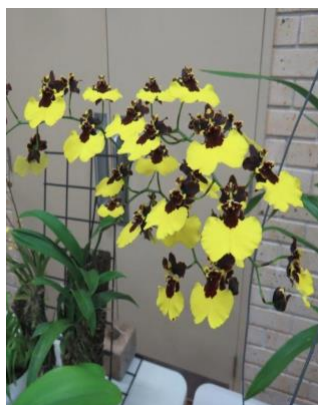
As there was no Bulletin in January, the following photos are of unpublished winners from our December 2021 Meeting

Judges Choice Open Species



Catt. coccinea - Jan Robinson

Intermediate Judges Choice



Gom. Alosuka 'Clare' - R. Cawley

Judges Choice Open Hybrid + PON



Paph. Wossner 'Black Wings' #1
- D. Mitsios

St Ives Orchid Fair



ST IVES SHOWGROUND
Mona Vale Road, St Ives

Friday 19th August 2022 9 am to 4 pm
Saturday 20th August 2022 9 am to 4 pm
Sunday 21st August 2022 9 am to 3 pm



18th ANNUAL

MINGARA ORCHID CLUB INC. FAIR & SHOW 2022

FREE ENTRY SATURDAY 25 JUNE 9AM - 4PM & SUNDAY 26 JUNE, 9AM - 3PM

Mingara Orchid Club presents the 18th Annual Mingara Orchid Club Fair and Show.

Join us for a great day out and view the most spectacular floral displays you will ever see!

All under one roof, in air-conditioned comfort, you'll be treated to a truly spectacular and amazing range of orchids from enthusiasts and societies from all over NSW.

The fair is your opportunity to purchase plants and orchid supplies from vendors who are also happy to relay their advice and tips so that you can ensure your orchids will flower to their full beauty.

Plants for sale over the weekend include, Australian Natives, Cattleyas, Cymbidiums, Dendrobiums, Phalaenopsis and Paphs as well as many other species, hybrids and accessories.

Includes potting & culture demonstrations throughout the weekend.

Vendors include:

- Bromeliad's Australia
- Coachwood Nurseries
- Dark Star Orchids
- Ezi Gro Orchids
- Fong Ping Orchids
- Johnson Orchids
- Kawana Gardens Nursery
- Kiwi Orchid Bank
- Nicky's Slippers
- Orchid Mania
- Orchid Productions
- Orchid Species Plus
- Orchids of Distinction

- Orchids on Newbold
- Swagman Sprayers
- Tinonee Orchid Nursery
- Western Orchid Culture
- Woolf Orchid Culture

Displays by:

- Aussie Shade Houses
- Bonsai World
- Orchid Societies
- Succulents from Coachwood Nursery

Venue: Mingara Recreation Club Ltd, Mingara Drive, Tumbi Umbi

Rhonda Jackson @ Home



Stenoglottis longifolia



Australian Ginger



Falling Embers



Cool Janning Banks



2022 AOF Essay Prize

The AOF Essay Prize is an annual writing competition, established with a generous endowment by the Slade family.

There will be three prizes –

1st Prize 2nd Prize 3rd Prize

\$350.00 \$250.00 \$150.00

The Foundation invites all Australian orchid growers to consider the topic for 2022 and submit an entry. We would like to hear about your ideas and experiences and benefit from them.

ESSAY TOPIC FOR 2022:

Too Many Orchids: 'managing space and addiction'

Everybody who commences growing orchids and is smitten by the "Orchid Bug" eventually has to address the issue of "space and addiction". How have you dealt with this complex issue to satisfy both sides of the equation?

The deadline for receipt of all entries is **June 30th 2022**

Details: <https://www.australianorchidfoundation.org.au/aof-essay-prize/>



Australian Orchid Council Conference

2 - 4 September 2022

**Logan Metro Sports & Events Centre,
357 Browns Plains Rd, Crestmead, QLD**

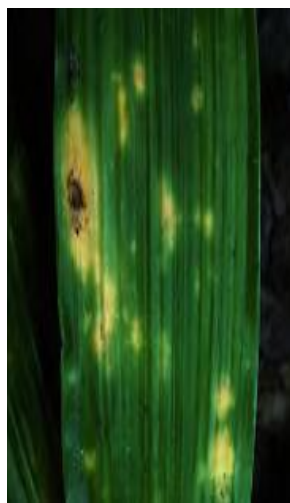
Details: <https://aocc2022.org>



Pest Forum



Dying from Scale



Yellow Leaf Blotching

The Curse of Boisduval Scale

reprinted with permission - courtesy Jim Brydie

PART 2 – Treatment and Control

The Damage - Armoured scales feed on plant juices. The threadlike mouthparts that they insert into the plant tissue to feed can be up to 8 times longer than the insect itself, and as they feed, they inject a toxic saliva of enzymes that kills the cells around it. They cause loss of vigour, deformation of infested plant parts, and yellowish chlorotic blotches on leaves and stems where the cells are badly damaged. Even a single female can eventually cause a centimetre wide, roughly circular yellow patch on the tissue around them. Ultimately, they cause loss of leaves, and even death of the plant, and they can also spread virus from plant to plant.

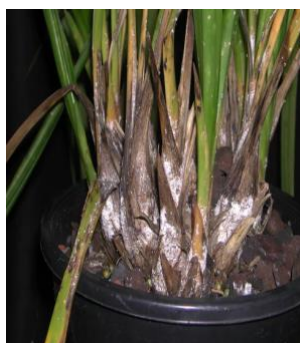
Boisduval scale can occur on any of the upper part of the plant, especially the leaves & pseudobulbs. In some cases, it can also infest the roots, even inside the pot, among the bark or other medium. In heavy infestations the scale will be easily seen on the flat surfaces of leaves and in patches up and down the pseudobulbs. The worst damage though, is done at the base of pseudobulbs, under the papery sheaths, where they can destroy the eyes that would become future years growths. You may not notice the damage until the pests have done their work, and if the infestation is severe, the primary eye and all secondary eyes may be damaged beyond recovery, sending the plant into a downward spiral from which it cannot recover. Plants with tightly clustered pseudobulbs are particularly at risk in this way.

What to do - As most infestations are brought into an orchid collection on other plants, the first line of attack has to be at the door of your greenhouse. Newly acquired plants should be thoroughly inspected before adding them to your population of healthy orchid plants. Carefully strip away or peel back the dry sheaths of the pseudobulbs, to make sure there are no scales hiding under them. Also pay special attention to the folded base of the leaf where it connects to the top of the pseudobulb, and to any crinkled grooves up and down the sides of the pseudobulbs. If there are no visible scales above the surface of the medium, you can be pretty sure there are none on the roots in the pot either.

Beyond inspection, you might also consider giving new plants a 'just in case' spray of insecticide, or perhaps keeping new plants in quarantine for several weeks and inspect them regularly for scale.

If you do find scale on a new plant, or one already in your collection, I believe spraying with insecticide is required. Some books suggest physical removal by scrubbing with cotton buds and isopropyl alcohol etc, but personally, I wouldn't trust this approach. You only have to miss one female under the rhizome or in a crack that you can't see, and a new generation is off and running in weeks.

The waxy armour coating protects egg laying females from most chemical controls. The scale is most vulnerable during the crawler stage, but while you may eliminate crawlers with one treatment, the pest's overlapping generations mean that it takes repeated application of chemicals to wipe out an infestation. Applications must be repeated several times at 10–14-day intervals, and three applications of pesticide is the minimum for effecting control. With the more benign treatments such as soaps or oils, the battle can be a long and prolonged one, and you may merely be limited to keeping the scale at controlled levels. (cont'd next page)



Severe case on a cymbidium
Photo courtesy AON



Photo courtesy AON



Photo courtesy AOS

(The Curse of Boisduval Scale – PART 2 Cont'd)

Many insecticides can be used, but I suggest that you select one that has a systemic effect. That is, one that is absorbed by the plant tissue itself and that poisons the insect when it sucks the poisoned sap. One I use is Dimethoate, which is commonly sold in Australia as Rogor but others are Metasystox and Confidor.

Some systemic poisons can be combined with a second type of insecticide called a contact killer. A contact poison only kills bugs you actually cover with the spray. They are not absorbed by the plant and therefore have no longer lasting systemic effect.

Use the systemic at the full rates shown on the container for the pest concerned. Don't be tempted to dilute it to a lower rate, as this may not kill all the target pests and can lead to a build-up of resistant strains of the insect over time. For the same reason, it is also recommended that you don't use the same insecticide for more than 9 consecutive months.

The combination I presently use is Procide as a contact killer and a rotation of Confidor or Rogor as the systemic. Procide (active ingredient Bifenthrin) is a good contact killer but has very low mammalian toxicity (25 times less toxic than aspirin). Confidor is best restricted to confined growing areas like a shade house or glasshouse, and not used in the garden, as it is believed to be associated with the bee population losses.

Scale on the Roots - One final observation. If you find one of the small number of plants where the scale infests the root system inside the pot, (in my experience it is mostly Cattleya alliance plants), I have found that the only practical remedy is to throw the whole plant, pot and all, into a bucket of the systemic insecticide with a weight holding it down, and leave it totally submerged for at least an hour. Afterward, fish it out with a wire & hang for a few days until it dries off. Then, wearing rubber gloves to keep your skin from absorbing insecticide, de-pot, clean it off thoroughly, and repot. In my experience so far, it doesn't seem to hurt the plant, and it does kill all the scale.

When you use pesticides, always remember that insecticides kill insect pests because they are poison and they are also poison to you as well. Make sure that you follow the instructions for safe use, and take the instructions seriously.

Even if you don't poison yourself immediately, many insecticide poisons have a medium-term cumulative effect on humans, and you may harm yourself over time if you don't take proper care.

References:

- * Boisduval Scale on Orchids by Paul Johnson (Orchid Digest Sept/Oct/Nov 2010)
- * University of Minnesota
(<http://www.entomology.umn.edu/cues/inter/inmine/Scale.html>)
- * Beaumont Research Center, Hilo, Hawaii
(www.extento.hawaii.edu/kbase/crop/type/d_boisdu.htm)
- * American Orchid Society article – A Scaly Problem

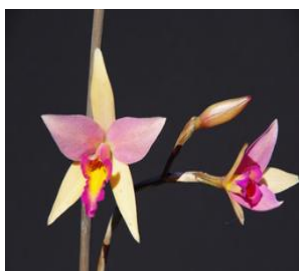
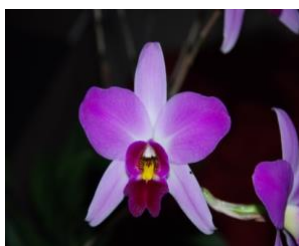
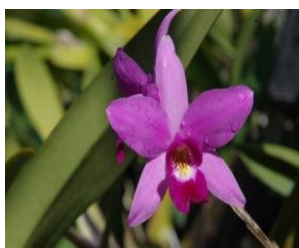
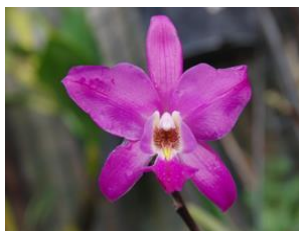


Society Promotional Stand @ Sutherland Saturday Markets

Dear SSOS Members - our Society promotion stand will be operating at the Shire Markets (in Flora St Sutherland) on **Saturday 23rd July** and we are looking for members to volunteer. If you can spare some time for the Society on that morning, could you please see Rhonda or David at the next general meeting.

Thank-you - Editor

Gary's Laelia's



Laelia anceps — article and photos courtesy Gary Hodder



Laelia is a small genus of 25 species in the orchid family

Laelia anceps species are found in areas of subtropical or temperate climate in Central America along the ranges from Mexico down through Guatemala to Honduras.

In nature it grows as epiphytes on tree trunks or branches on the edge of forests at altitudes of 1500-2000 m.

The plants are often exposed to full sun and strong winds, with hot days and cold nights. ... The next morning strong winds and sunshine quickly dry the plants before rain falls again in the evening.

It should be noted that *Laelia anceps* has also proven to be a fantastic parent within the cattleya group.

Both the species and its hybrids will do best in bright cattleya light. If the foliage is too green the plant is not receiving enough light and will not grow strongly or flower well.

They need full sun in Winter. Air movement is not a problem for plants outdoors, but if grown inside good movement of fresh air is recommended.

One needs only to look at the weather of Mexico to learn about the watering schedule of *Laelia*.

The late spring, summer, and early Autumn months are a period of heavy tropical rains.

Make sure to keep your plants well-watered during this period. Just the opposite happens during the other times of the year, when temperatures are lower and it is quite seasonally dry. Water less at this time.

Laelias love ample fertilizing during their rapid growth season in the summer. In the growing period apply fertilizer weekly weakly.

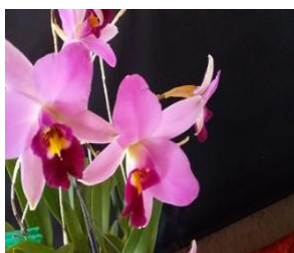
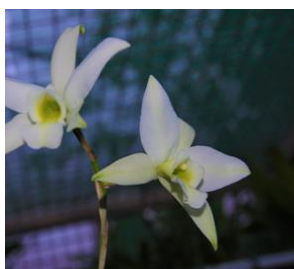
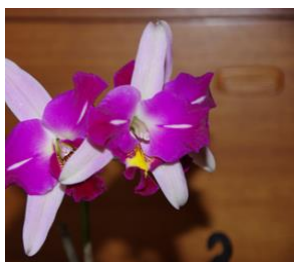
Potting media is a very important factor for attaining good culture of *Laelia anceps* and its hybrids.

They are quite susceptible to root loss if they are kept too wet in the dry season or if the potting mix is old. Very coarse mixes work well with Laelias.

Use a high-quality medium grade of pine bark, even occasionally adding some Charcoal Perlite or Blue Metal stone (Volcanic Basalt) for durability.

Other inorganic additives will also work. The time of potting is also very important. It is best done right when a flush of new roots appears.

Gary's Laelia's (cont'd)



All Grown and Photographed
by - Gary Hodder - 2022



Upcoming Shows and Events

10-11 June, *Sutherland Shire Orchid Society Winter Show* - Woollooware Shores Retirement Village, 2-28 Alexander Ave. Taren Point (details on page 9)

25-26 June, *Mingara Orchid Fair and Show* - Mingara Recreation Club, Tumbi Umbi

14-17 July, *Bankstown Orchid Society Winter Show* – Lidcombe Shopping Centre, Level1 / 92 Parramatta Road, Lidcombe.

12-14 August, *National Orchid Extravaganza* - (incorporating the Paphiopedilum Society of NSW), The Arena Sports Club, 140 Rookwood Rd, Yagoona

19-21 August, *St Ives Fair* - St Ives Showground

8-10 September, *Sutherland Shire Orchid Society Spring Show* (watch for confirmation and details)

7-9 October, *Southern Orchid Spectacular* - Sutherland Basketball Stadium, Waratah Park, Rawson Ave, Sutherland. (confirmation of details soon)

Dear SSOS Members – we would really appreciate your @ Home photos or articles to include in our monthly Bulletins.

To contribute, please email to:
David Hicks E: davehicks@optusnet.com.au
(by the 24th of each month)
thank-you - Editor

Disclaimer: The growing guides included in this Bulletin are provided as a starting basis to cultivation, and local conditions in your area may require modification to these suggestions. The Sutherland Shire Orchid Society Inc. does not endorse or support any claims or opinions expressed by the authors of these articles, and are not responsible for the results of your cultivation practices.